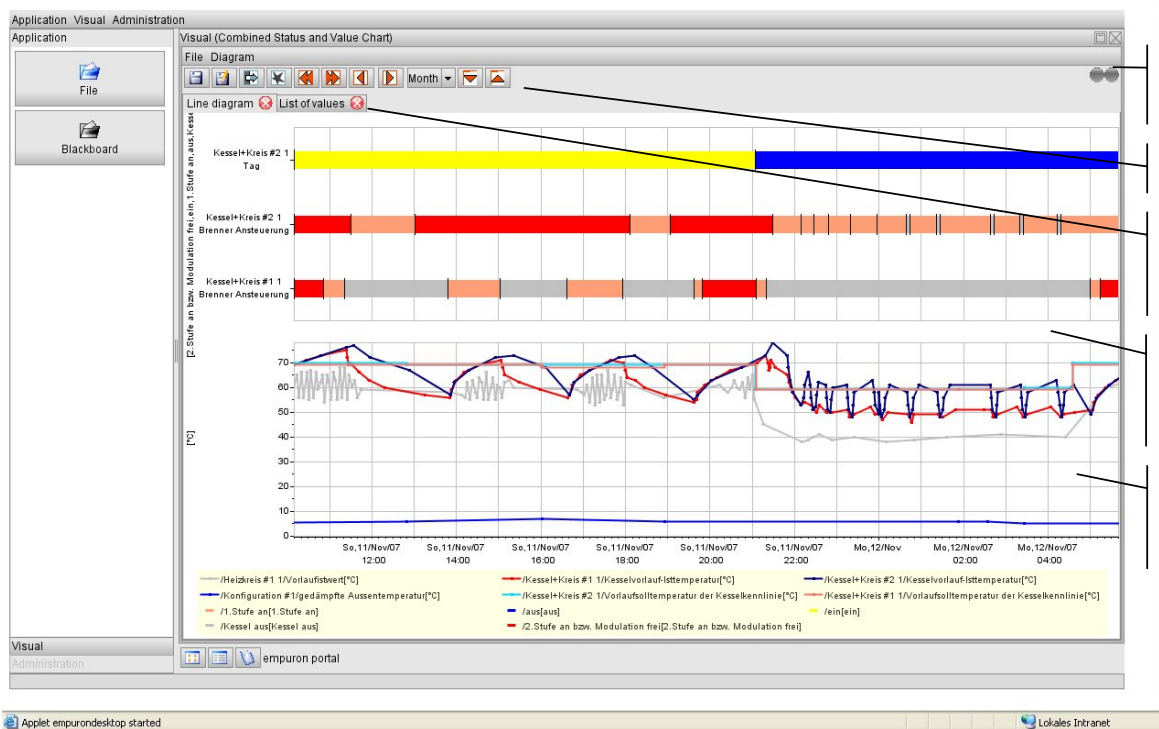


Access Information of different systems and data bases at any workstation in the back office - empuron visual is a tool for a system-independent visualization and evaluation of messages, values and states of legacy systems, in distributed infrastructures (control systems, automation systems, ...) and in data-bases (archive, Data-Warehouses, ...). Standard workplace is e. g. a PC, connected to the Internet or Intranet.

A clear, diagram-based representation of the information allows a fast evaluation of most diverse data constellations. Data security and protection of privacy are ensured by professional safeguard mechanisms.

- The „Union Single Interface System“ affords an integration of miscellaneous data sources within a report or an evaluation in a homogeneous Web interface.
- Automation of the evaluations with integrated tools for the formats PDF, Excel, HTML et al.
- The access to data is secured by data filters. Datasets must be released for the access explicitly.

A view on the Multiple Document Interface („MDI“) with Toolbars incorporated:



Multiple Document Interface „MDI“

Toolbars

„Tabs“ for a quick switching between representations

Value information: Touching the curve causes a tool tip for the values displayed

Combined charts - simultaneous presentation of status and values

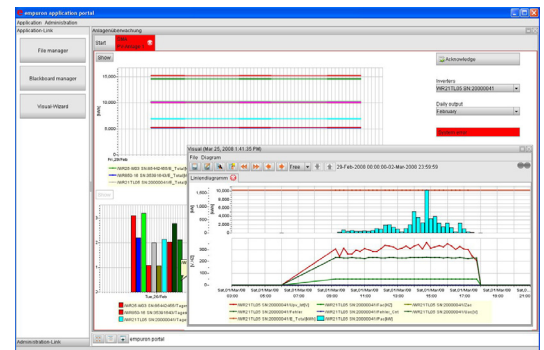
The multiple document interface offers a considerable comfort in handling the information of the different data sources. A set of assistants are integrated into the user interface, so that the creation of evaluations and their change are easily feasible for users.

- The system functions are attached to a role definition, which facilitates for every user the access to the set of his personally defined evaluation functions.

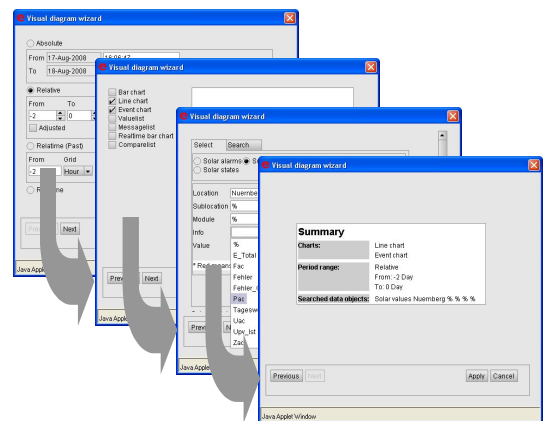
Important system functions in the overview:

- Synchronisation of diagrams and lists, when Zooming in charts
- Adjusted zooming and scrolling according to defined time periods (day, week, month, year)
- Comfort in synchronisation of the diagrams in different windows
- Different representational variants for messages and status information with text filter control
- Presentation of values and status information in a diagram ("Combined Chart" with several scales and labels).
- Access to values and status information in the real time data base and in archives
- Integration of several data bases, subsystems or control systems in one portal
- Ability to clientele processing by allocation of groups and individual persons to org. Units with suitable data filtering
- User roles with assigned evaluation functions; The assignment of the roles and data filters takes place in the administrator dialogue and is at any time alterable by authorized users;
- Integration of most different file formats into the "user profile" (directory of evaluations) and display in the user interface of **empuron visual**
- History function for "old evaluations"
- Print function, generation of diagrams and tables in the PDF format
- Black board for the exchange of evaluations and documents between the users
- Produce and exchange graphic and tabular Snapshots
- Comfortable creation and administration "Web links" for the export of information
- Transfer of "Web links" alternatively into the formats CSV, PDF or HTML and/or into diagram formats
- Various possibilities of the Excel export. Each tabular information can be exported into Excel by pressing a button, independently whether values or messages are represented. "Web links" permit the multiple integration into a Excel file - every "Web link" represents an own access to Excel also including automatic adjustment of the time borders, in accordance with the evaluation pre-settings.
- Extensive additional functions and modules, integration with the help of JBoss middleware components
- Full Graphic Report Designer with integration of the generated Reports into the **empuron visual** Portal (administration dialogue)
- Possibility of integration into existing reporting systems (e. g. Crystal Reports)

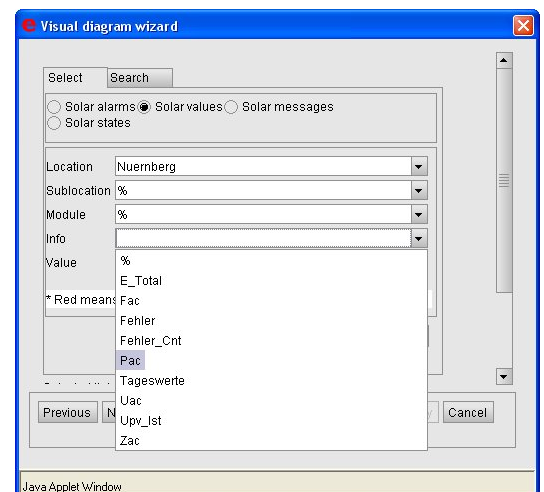
empuron visual is a time-saving aid for routine or ad hoc evaluations, which systematically supplies information to departments or service teams. The Internet-able user interface is ideal for an information transfer over larger distances.



User interface **empuron visual IM** with predefined, dynamic analysis



Wizard for creating evaluations or Web links



Dialogue for selecting data objects