

### Browser based display of station diagrams

Based on the **empuron** HTTP Server for SINAUT Spectrum®, **empuron visual** enables now the possibility to display Spectrum station diagrams, so called "World Maps" in the Web browser.

An assignment of the portal function in the **empuron visual** roles definition permits the access. Apart from the selection of individual station diagrams from a list by use of the station/picture names or - numbers, the selection using the three step „TA“ is possible – similar to „Alpha-selection“ in Siemens SINAUT Spectrum®.

### Access to the Siemens SINAUT Spectrum® „Outage Scheduler“ or other ORACLE based applications from the empuron visual portal

The power of **empuron visual** in the integration of user interfaces of existing ORACLE® applications in the Web browser was impressively demonstrated with Siemens in the project employment. **empuron visual** allows the flexible operation of the user interfaces of the „Outage Schedulers“ on freely selectable, decentralized workstations and extends the data access and acquisition possibilities tremendously, e.g. for maintenance departments.

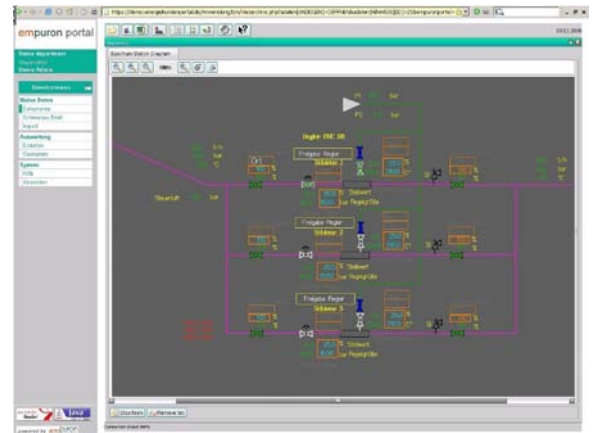
The provision of the supply of ORACLE® applications is solved in the context of the structures of the **empuron** portal: Users receive the access to the Outage Scheduler over an appropriate **empuron visual** role definition. The menus for selection are faded in for authorized users. Further surface components (e. g. "SDM") can be inserted accordingly in the portal and can be used browser based – e. g. in the Intranet or using VPN.

Advantages:

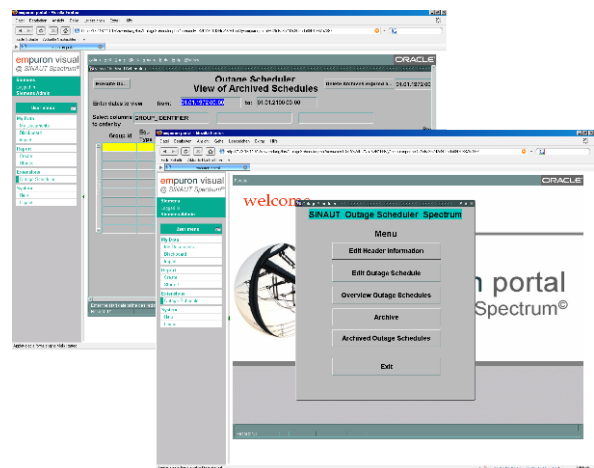
- Use of existing ORACLE® applications at arbitrary PCs with installed Browser, if a portal access is activated.
- The existing ORACLE® applications remain 1:1. The control surface is additionally accessible in the portal.
- As added value for each portal user, general portal functions are available – e. g. the blackboard, the user directory and import functions to be able to exchange (dependent on the rights of access) arbitrary documents.

### New functions in empuron visual

**empuron software grows with each installation. A set of new functions is now available (cp. the issues on the right).**



Display of an selected stations diagram



User interface of the SINAUT Spectrum® Outage Scheduler in the **empuron visual portal**

#### New functions in empuron visual

- TA filter for long-term archiving – from different archives TAs are freely selectable.
- Wildcards/letter combinations - for selection of the data objects („TA“) for the display in diagrams and tables, arbitrary Wildcards/letter combinations can be used.
- Selection of messages – the flag „real time message“ will be evaluated.
- Recorder function in the line diagram - archive curves, can be supplemented cyclically from the real time data base with the actual value.
- Two Y axis in the line diagram – TAs can be assigned to the second Y axis in the line diagram (improvement of the scaling over a second yardstick).
- Access to LIDI lists – besides the free selection of messages from archives, visual offers now the selection of messages from LIDI lists.
- Spectrum Data-Warehouse access and visualisation – from the visual portal the time series e. g. for "Production" and "Forecast" of the Spectrum Data Warehouse can be accessed.